

A QUALITY-FIRST APPROACH TO MANUFACTURING

Abbott-Services

Articles

**Author(s):**

Michael Kennelly

Publish Date:

21st July 2023 | 5 minutes

Abstract:

This article provides an insight into our manufacturing process and how quality is at the core of every step, as well as how we are continuing to drive innovation across our supply chain to provide fit for purpose, patient-friendly products which meet the specific nutritional needs of patients.

[DOWNLOAD PDF](#)
[A QUALITY-FIRST APPROACH TO MANUFACTURING](#)
[MANUFACTURING PROCESS](#)
[GETTING PRODUCTS TO PATIENTS](#)
[GETTING PRODUCTS TO PATIENTS](#)
[PRODUCT SHIPPING](#)
[LOOKING FORWARD...](#)
[A SUSTAINABLE FUTURE](#)

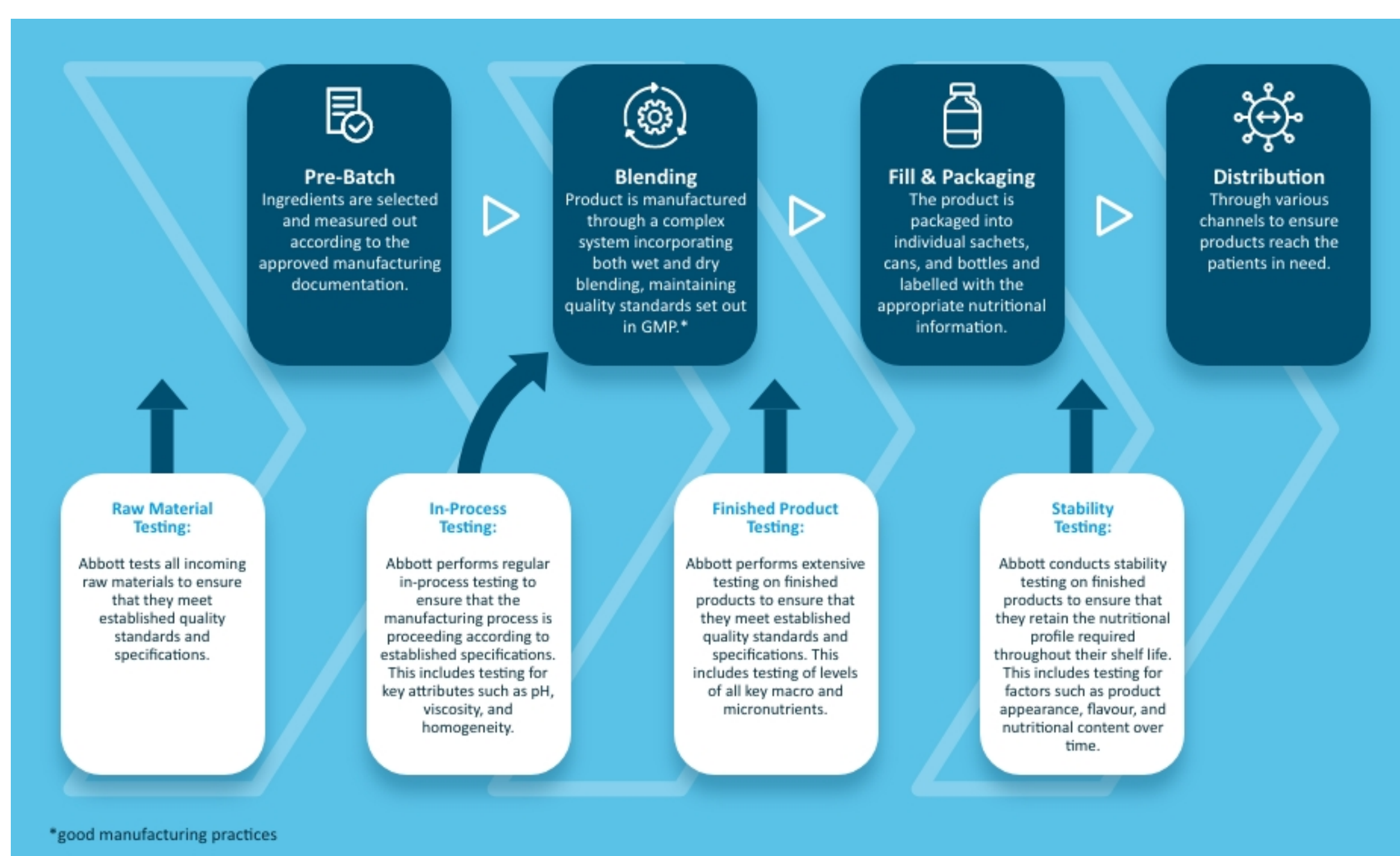
A quality-first approach to manufacturing

In pursuing our vision to improve people's lives through the development of innovative healthcare products, Abbott's manufacturing and distribution process for nutritional products has been designed around the following:

- Quality to ensure that our products meet rigorous standards for safety, purity, and efficacy.
- Patient-centricity through careful coordination and management to ensure that our products reach the patients needing them.
- Innovation to continuously improve through ingredients, formulation, manufacturing, and digital technologies.

Manufacturing Process

Whilst many of our customers only ever see the finished product, there are many stages of production before products reach patients, all controlled through our robust quality management system to ensure consistency and compliance. A summary of our process and quality control measures is outlined below.



Getting Products to Patients

During distribution, our products are stored in appropriate conditions to maintain their quality and efficacy. Storage conditions within our warehouse environment are monitored and maintained to ensure the products remain effective.

Products are shipped from our Sittingbourne and Alloga storage facilities to:

Patients who can order through Abbott's orderline for products shipped directly to their door. Our H2H pharmacy checks and fulfils prescriptions for a fast and reliable service.

- Patients who can order through Abbott's orderline for products shipped directly to their door. Our H2H pharmacy checks and fulfils prescriptions for a fast and reliable service.
- Hospitals and healthcare facilities who can order products through our trusted partner Alloga
- Pharmacy Retailers who can order through our wholesalers AAH or Alliance

In 2022, Abbott fulfilled over 285,000 patient orders made up of in excess of 1,000,000 order lines.

Looking forward...

Innovation is a crucial driver of Abbott's manufacturing process, enabling us to develop high-quality, effective, and patient-friendly products that meet the specific nutritional needs of patients with medical conditions.

Our investment in innovation puts patients at the heart of our product development process, whether to develop products for those patients who choose a plant-based diet or create efficiencies in the manufacturing process to improve quality.

A Sustainable Future

In everything we do, we are committed to sustainable manufacturing practices, and we are continually working to create a more sustainable manufacturing process for our products, including a focus on:

- **Energy Efficiency:** Implementing energy-efficient technologies and practices in manufacturing facilities to reduce energy consumption, i.e. installation of energy-efficient lighting and energy management systems to monitor and control energy use.
- **Water Conservation:** Implementing water conservation measures in manufacturing facilities to reduce water consumption, i.e. installation of water-efficient fixtures and equipment, water recycling and reuse programs, and water management systems to monitor and control water use.
- **Waste Reduction:** Minimising waste generated during the manufacturing process, i.e. recycling programs for plastic, cardboard, and metal and implementing programs to reduce packaging waste. Our Sittingbourne site has been classified as a zero waste to landfill site for the last 5 years.
- **Sustainable Sourcing:** Reduction of the environmental impact of the raw materials used in our oral nutritional supplements, i.e. programs to source ingredients from sustainable sources and reduce the environmental impact of our supply chain.

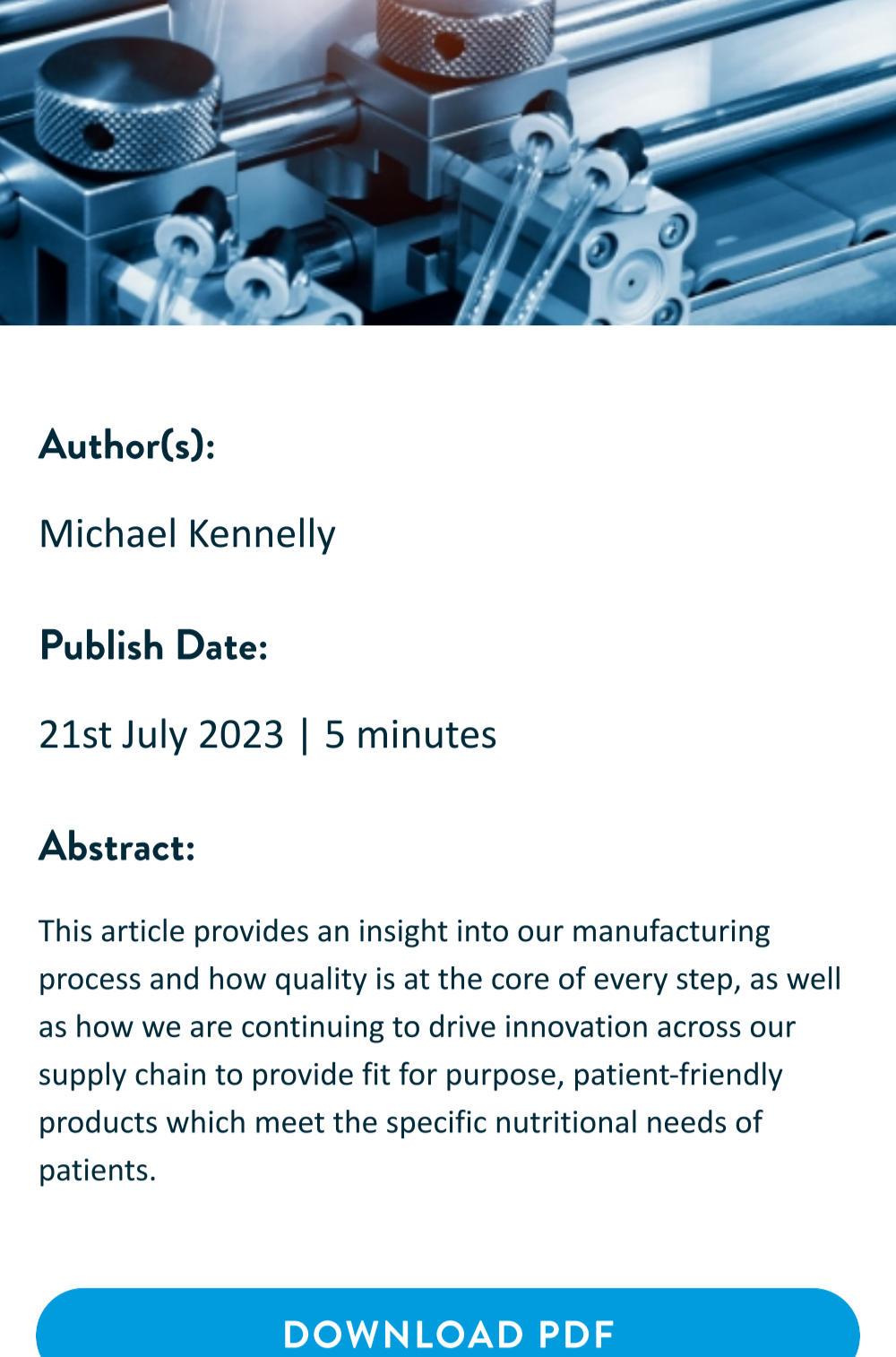
UK-N/A-2300236 | July 2023

[Home](#) / Current Page

A QUALITY-FIRST APPROACH TO MANUFACTURING

Abbott-Services

Articles

**Author(s):**

Michael Kennelly

Publish Date:

21st July 2023 | 5 minutes

Abstract:

This article provides an insight into our manufacturing process and how quality is at the core of every step, as well as how we are continuing to drive innovation across our supply chain to provide fit for purpose, patient-friendly products which meet the specific nutritional needs of patients.

[DOWNLOAD PDF](#)[A SUSTAINABLE FUTURE](#)

A quality-first approach to manufacturing

In pursuing our vision to improve people's lives through the development of innovative healthcare products, Abbott's manufacturing and distribution process for nutritional products has been designed around the following:

- Quality to ensure that our products meet rigorous standards for safety, purity, and efficacy.
- Patient-centricity through careful coordination and management to ensure that our products reach the patients needing them.
- Innovation to continuously improve through ingredients, formulation, manufacturing, and digital technologies.

Manufacturing Process

Whilst many of our customers only ever see the finished product, there are many stages of production before products reach patients, all controlled through our robust quality management system to ensure consistency and compliance. A summary of our process and quality control measures is outlined below.

Raw Material Testing:

Abbott tests all incoming raw materials to ensure that they meet established quality standards and specifications.

**Pre-Batch**

Ingredients are selected and measured out according to the approved manufacturing documentation.

In-Process Testing:

Abbott performs regular in-process testing to ensure that the manufacturing process is proceeding according to established specifications. This includes testing for key attributes such as pH, viscosity, and homogeneity.

**Blending**

Product is manufactured through a complex system incorporating both wet and dry blending, maintaining quality standards set out in GMP.*

Finished Product Testing:

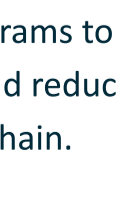
Abbott performs extensive testing on finished products to ensure that they meet established quality standards and specifications. This includes testing of levels of all key macro and micronutrients.

**Fill & Packaging**

The product is packaged into individual sachets, cans, and bottles and labelled with the appropriate nutritional information.

Stability Testing:

Abbott conducts stability testing on finished products to ensure that they retain the nutritional profile required throughout their shelf life. This includes testing for factors such as product appearance, flavour, and nutritional content over time.

**Distribution**

Through various channels to ensure products reach the patients in need.

*good manufacturing practices

Getting Products to Patients

During distribution, our products are stored in appropriate conditions to maintain their quality and efficacy. Storage conditions within our warehouse environment are monitored and maintained to ensure the products remain effective.

Products are shipped from our Sittingbourne and Alloga storage facilities to:

- Patients who can order through Abbott's orderline for products shipped directly to their door. Our H2H pharmacy checks and fulfils prescriptions for a fast and reliable service.
- Hospitals and healthcare facilities who can order products through our trusted partner Alloga
- Pharmacy Retailers who can order through our wholesalers AAH or Alliance

In 2022, Abbott fulfilled over 285,000 patient orders made up of in excess of 1,000,000 order lines.

Looking forward...

Innovation is a crucial driver of Abbott's manufacturing process, enabling us to develop high-quality, effective, and patient-friendly products that meet the specific nutritional needs of patients with medical conditions.

Our investment in innovation puts patients at the heart of our product development process, whether to develop products for those patients who choose a plant-based diet or create efficiencies in the manufacturing process to improve quality.

A Sustainable Future

In everything we do, we are committed to sustainable manufacturing practices, and we are continually working to create a more sustainable manufacturing process for our products, including a focus on:

- Energy Efficiency: Implementing energy-efficient technologies and practices in manufacturing facilities to reduce energy consumption, i.e. installation of energy-efficient lighting and energy management systems to monitor and control energy use.
- Water Conservation: Implementing water conservation measures in manufacturing facilities to reduce water consumption, i.e. installation of water-efficient fixtures and equipment, water recycling and reuse programs, and water management systems to monitor and control water use.
- Waste Reduction: Minimising waste generated during the manufacturing process, i.e. recycling programs for plastic, cardboard, and metal and implementing programs to reduce packaging waste. Our Sittingbourne site has been classified as a zero waste to landfill site for the last 5 years.
- Sustainable Sourcing: Reduction of the environmental impact of the raw materials used in our oral nutritional supplements, i.e. programs to source ingredients from sustainable sources and reduce the environmental impact of our supply chain.

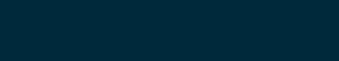
UK-N/A-2300236 | July 2023

ITEM

ITEM

ITEM

ITEM

[HIPAA Notice of Privacy Practices](#)[Unsubscribe](#)[Privacy Policy](#)[Terms of Use](#)

© 2021 Abbott. All Rights Reserved.